

## COMPANY PROFILE



## V&L LANDSCAPE ARCHITECTS

Postal Address:

Physical Address:

Tel:

Fax:

E-Mail:

Web site

PO Box 36723, Menlo Park, 0102

347 Charles Street / Justice Mahomed Street, Brooklyn, Pretoria

(012) 346 1289

(012) 346 1292

[vrl@vrl.co.za](mailto:vrl@vrl.co.za)

[www.vrl.co.za](http://www.vrl.co.za)

## PRACTICE HISTORY

The history of V&L Landscape Architects dates back to 1975. Through the years, the practice has operated under the directorship of respected names in the Landscape Architectural profession, such as Professor Willem van Riet, Johan Louw and Peter Velcich.

The company started as **Willem Van Riet Landscape Architects CC**, and was later renamed as **Van Riet & Louw Landscape Architects CC**. The company now operates as **V&L Landscape Architects**, with **Johan Louw** (PrLarch, MILASA, SACLAP) as director.

**V&L Landscape Architects'** philosophy is based on the idea of harnessing the power of nature to inform the science of ecological planning and landscape architecture. The company further developed a unique planning process, resulting in the implementation of highly successful and sustainable landscape and environmental projects.

The same process was applied to tourism planning and urban design, now forming a substantial addition to V&L's expertise.

The quality of service provided has always been, and remains to date, of the highest standard in the industry.



## COMPANY RESOURCES

Situated in Brooklyn, Pretoria, the practice holds the capacity for excellent service provision within the wide spectrum of the landscape architectural profession.

Aside from the partner, V&L Landscape Architects is supported by in-house landscape architects, environmental professionals, tourism planners, technicians, and administrative staff:

**Rodney Brown** (BL Pret, MUD Wits [incomplete], L Arch, MILASA); joined the firm in 1989 and specializes in

Integrated Development Planning, Landscape Design and Implementation and Environmental Management.

**Johalize Koch** (BL Pret) joined the firm in 1998 and specializes in Master Planning, Landscape Design, Urban Design, Construction Drawing, Contract Administration and Implementation.

**Ralene van der Walt** (ML Prof) joined the firm in 2013 and does Master Planning, Landscape Design, Construction Drawing, Contract Administration and Implementation and 3D modelling

**Kim Dean** (BSc Landscape Architecture) joined the firm in 2013 and does Master Planning, Landscape Design, Construction Drawing, Contract Administration and Implementation.

**Ingrid van Staden** (BA Pret) joined the firm in 1988 and heads the Administrative and Financial Department.

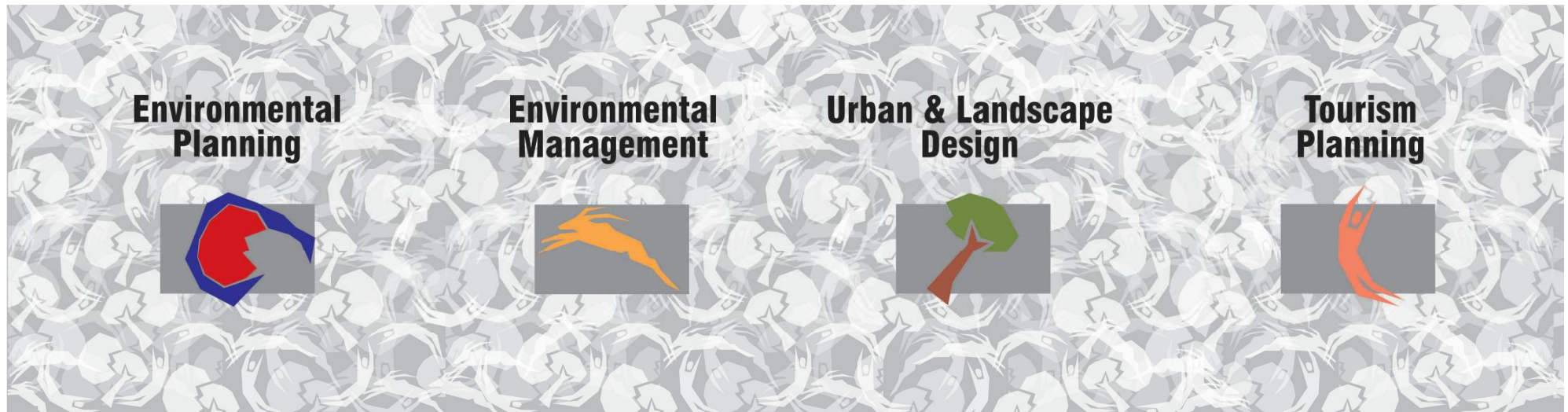
**Paul Gwekwe**, Office assistant, joined the firm in 2012.

V&L Landscape Architects' multi-disciplinary approach enables the

company to be actively involved in all phases of a project, from Baseline Data Surveys, to detailed Architectural and Landscape Design.

This approach involves specialists in various fields with whom V&L have developed a close working association, amongst others, ecologists, natural science specialists, archaeologists, anthropologists, sociologists, architects, engineers, and town and regional planners.

## EXPERTISE





## ENVIRONMENTAL PLANNING

Environmental planning is a holistic approach to master planning whereby all aspects of the environment are studied and measured against the development requirement.

This process enables planners and developers to clearly understand the opportunities and constraints of a site.

This approach is one built on the principle of sustainability, and guides the development towards an ecologically sustainable, economically

viable and aesthetically acceptable solution.

Common examples of such work are game parks and resource areas, eco-tourism ventures, recreation and conservation areas.

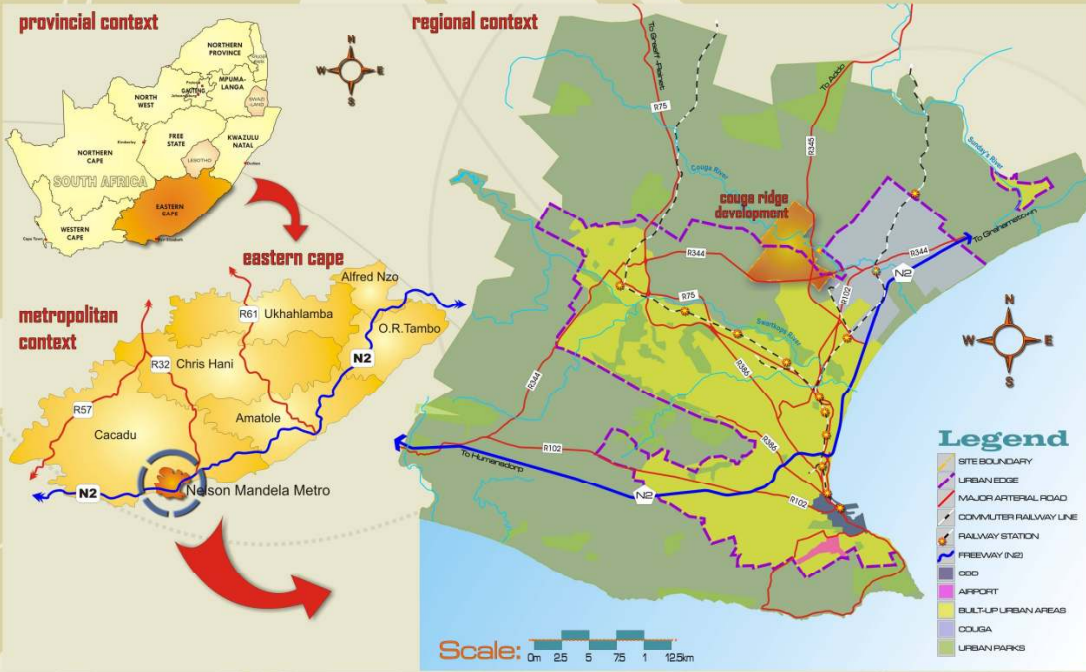
The process promotes the integration of social, economic and environmental factors in the planning, implementation and evaluation of decisions.



Important Projects undertaken by V&L in the field of Environmental Planning:

|      |  |  |   |   |   |   |   |
|------|--|--|---|---|---|---|---|
| 1978 | Pilanesberg National Park Planning and Management Proposals. Bophuthatswana Dept of Agriculture, Mafikeng. | Master plan. H.H. Sheikh Mohammad Bin Zayed Al Nahyan. Crown Prince Abu Dhabi. | 2008  | Coega Ridge Master Planning, Nu-way, Port Elizabeth | 2010  | Vegetation Rehabilitation Visual Analysis for the Mbombela Stadium Powerline, Netgroup, Nelspruit |   |
| 1997 | Tswaing Crater Museum. National Cultural History Museum, Pretoria.   | 2006   | Buffelspoort Dam Resource Management Plan, DWAF, Rustenburg.                  | 2009  | Modder B Conservation Plan, Kiron (Pty) Ltd, Benoni                                     | 2011  | Barberton Tourism Route and Signage Planning, BATOBIC, Mpumalanga                     |
| 1997 | Zimbali Forest Estate. Moreland Estates (Pty) Limited. Durban, Kwa-Zulu Natal.                             | 2007   | Broodboom Eco-Estate, Bridgeroute Group of Companies, Middleburg, Mpumalanga. | 2009  | Lekgalameetse Nature Reserve Master Plan, Limpopo Tourism and Parks, Polokwane          | 2011  | Integrated Management Plan for Barberton Nature Reserve, BATOBIC and MTPA, Mpumalanga |
| 2003 | Management Plan- Kirthar National Park, Govt. of Pakistan and Hagler Bailey, Pakistan.                     | 2007   | Goosebay Eco Estate, Master planning, VLDC, Vaal river, Parys, Freestate.     | 2009  | Mpumalanga Tourism Parks Agency Seven Priority Reserve Integrated Management Plan, MTPA |   |   |
| 2006 | El Maha Hunting Estate Morocco. Development  |  |   | 2010  | Visual Analysis for the Mbombela Stadium Powerline, Netgroup, Nelspruit                 |   |   |

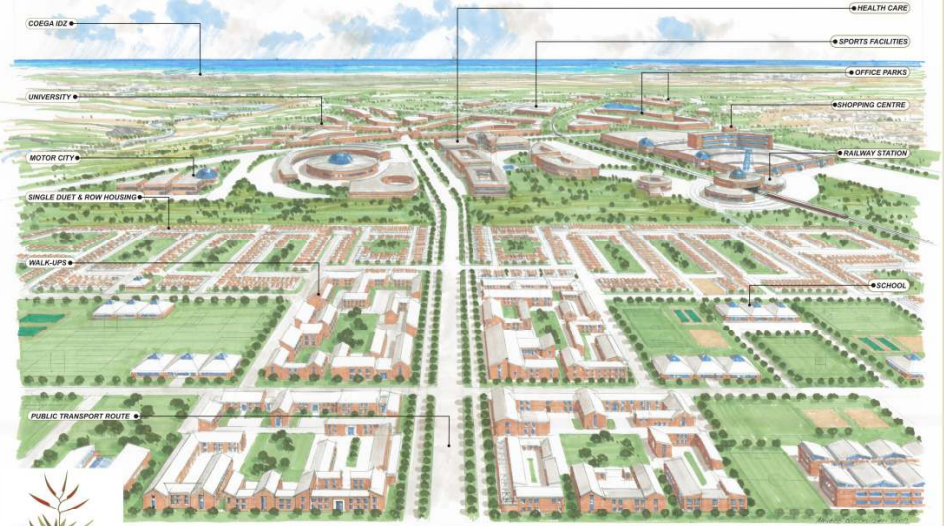




## COEGA RIDGE

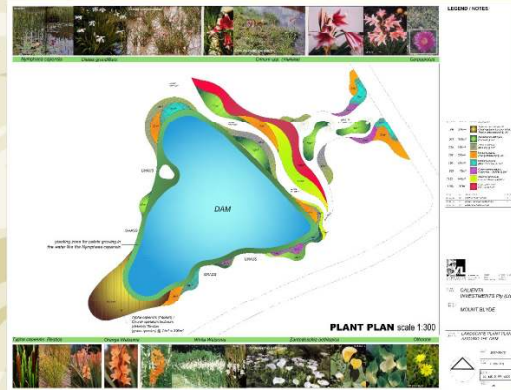
V&L Landscape Architects has been commissioned by Nu-Way to develop a masterplan for the area north of Coega IDZ to elevate the housing shortage of the NMBM. The project area encompasses 3177 ha inclusive of the Coega valley and Coega River. The appointment included the development of guidelines for a housing framework, and a detailed layout masterplan for a high density development, medium density development, eco-reserve, golf course, equestrian and regional node (inclusive of retail areas, health care facilities, university, office parks etc.) The proposed development could make provision for as much as 38 890 erven in the high density area and 2345 erven in the medium density area. This development proposal is based on our principals to provide a fully sustainable urban environment, integrated with natures and guided by social structures.

## PERSPECTIVE VIEW TOWARDS REGIONAL NODE FROM HIGH DENSITY DEVELOPMENT



**"HOLISTIC LIFESTYLE OF THE FUTURE"**

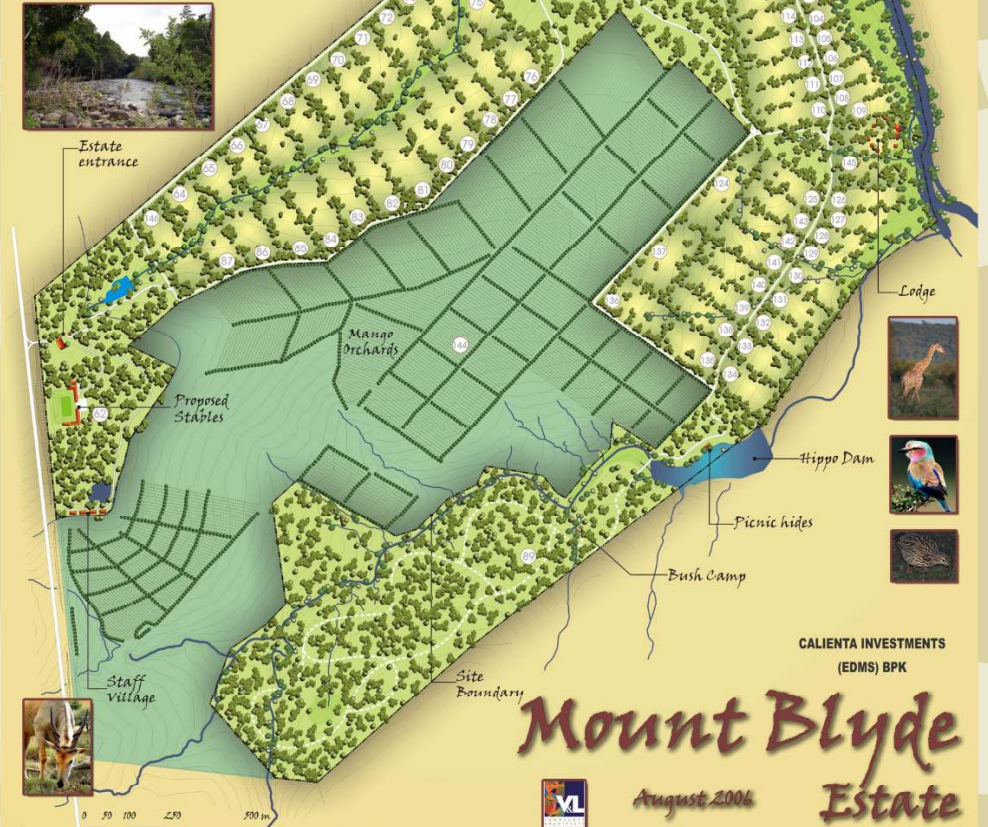
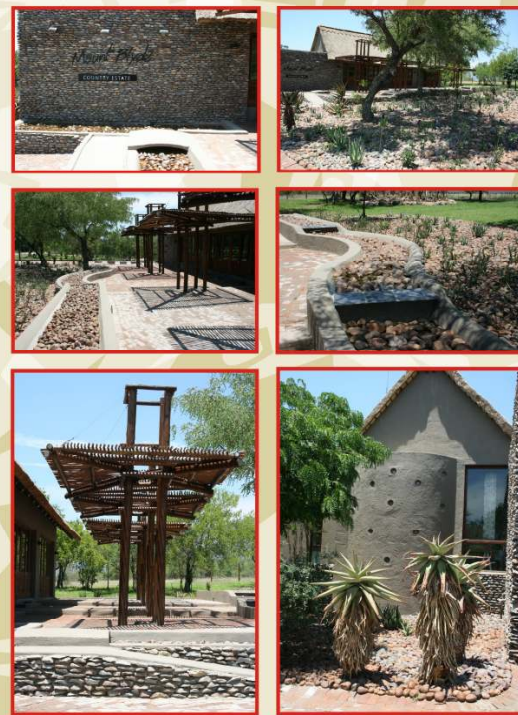




"Mount Blyde Country Estate is situated on the banks of the Blyde River. Overing 80 gentleman stands with spectacular views of the mountains, the Blyde River and the incredible natural surroundings. Each of the individual lodge sites was chosen to emphasise these aspects. Because of the sensitive ecological surroundings the proposed architectural style is simple, unassuming and environmentally friendly.

The development is a country estate. This implies that there is a balance between the natural surrounds, the agricultural activity and the new residences to be built. The main objectives to be achieved in this development are:

- A common architectural theme that forms a unity
- A sense of place
- A respect for the natural place and the context





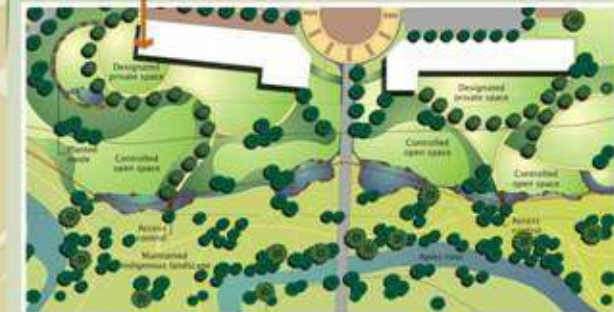
# RAINBOW JUNCTION



activities - photos



conceptual approach



controlled open space

0 25 50 100m



perspective view of public park

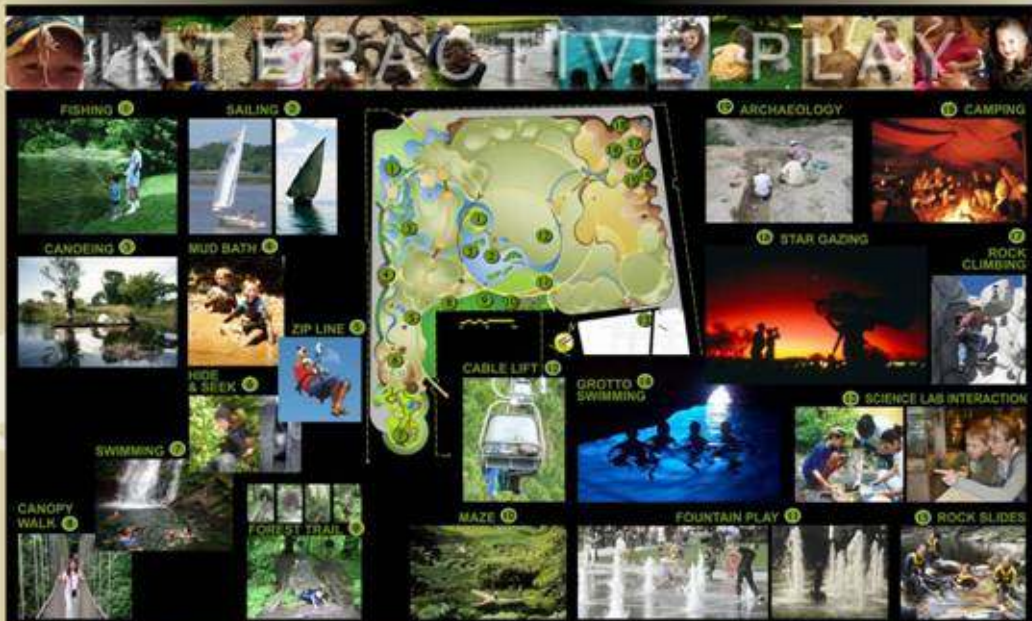


public park

0 25 50 100m

V&L Landscape Architects has been commissioned by the Rainbow Junction Development Company to prepare a landscape rehabilitation and development master plan for the multimillion rand Rainbow Junction development in Pretoria North. The project area encompasses 140 ha along the Apies River. The appointment will include developing a rehabilitation landscape plan for the Apies River, and the landscape and open space master planning, detail planning and implementation of the urban framework. This includes commercial, residential, industrial, retail, themed office, hotel and recreation districts.

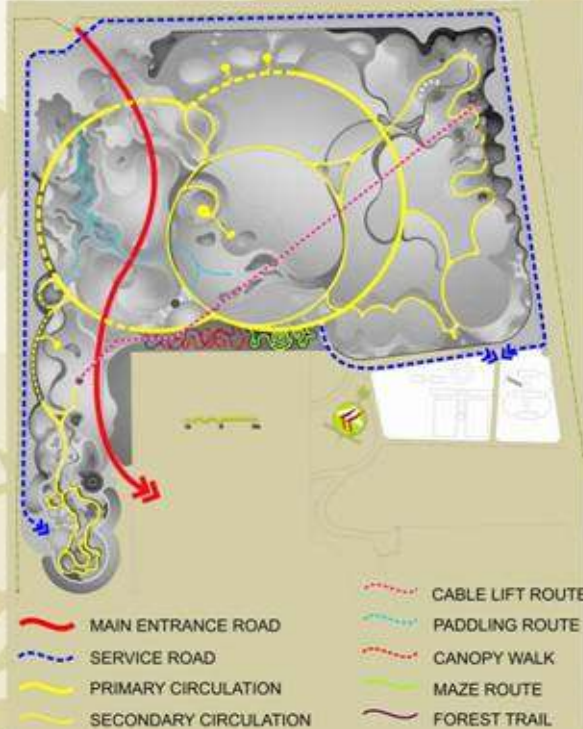




**2009 - Dubai Family Adventure Ecopark  
Nad Al Sheba, International Conservation  
Services, Dubai, UAE**

This project entailed the masterplanning of a limited access recreational facility, with high educational emphasis, in Dubai. The proposal includes active and passive recreational amenity, with integrated animal husbandry at levels ranging from subtly enclosed (more dangerous) specimens to free-range uninhibited species. Human animal interaction was enabled through design. The proposal includes a full animal management facility, consisting of hospital / veterinary centre, quarantined holding facilities, kitchens, nursery and maintenance workshops.

The proposal has been accepted by the client, but an alternative site for the development has been offered, which would further included more extensive activities such as game view drives, wilderness camps, etc.





**AL ALRIAM CHILDREN'S ECOPARK**

**ACTIVITIES & EXPERIENCES**  
CONCEPT MASTERPLAN DEVELOPMENT



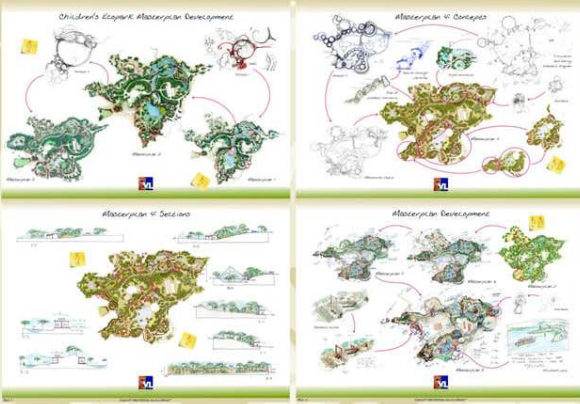
**AL ALRIAM CHILDREN'S ECOPARK**

**ANIMAL DIVERSITY**  
CONCEPT MASTERPLAN DEVELOPMENT



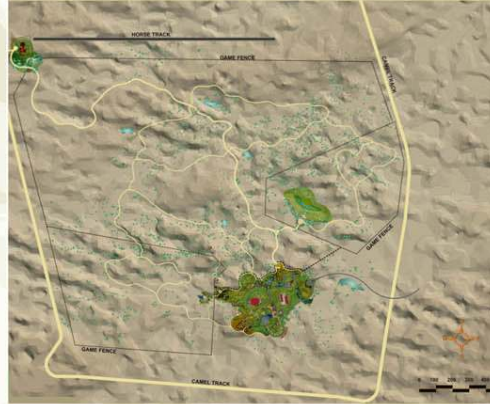
**AL ALRIAM CHILDREN'S ECOPARK**

**LANDSCAPE & HABITATS**  
CONCEPT MASTERPLAN DEVELOPMENT



**AL ALRIAM CHILDREN'S ECOPARK**

**ZONING & CIRCULATION**  
CONCEPT MASTERPLAN DEVELOPMENT



**AL ALRIAM CHILDREN'S ECOPARK**

**LANDSCAPE LAYOUT PLAN**  
CONCEPT MASTERPLAN DEVELOPMENT



**AL ALRIAM CHILDREN'S ECOPARK**

**INTERACTIVE ENVIRONMENT IMAGERY**  
CONCEPT MASTERPLAN DEVELOPMENT



AL NAKHALI

# Safari park

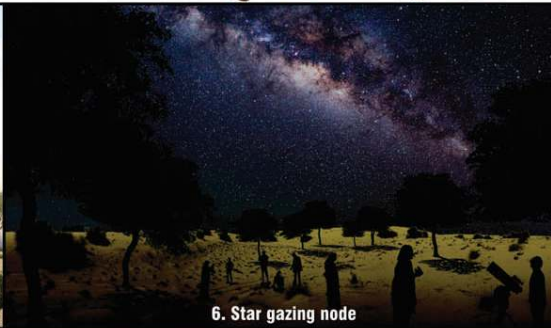
concept landscape perspectives



1. Giraffe / small animals / pet feeding

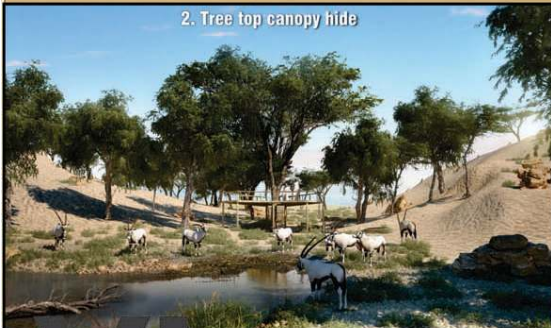
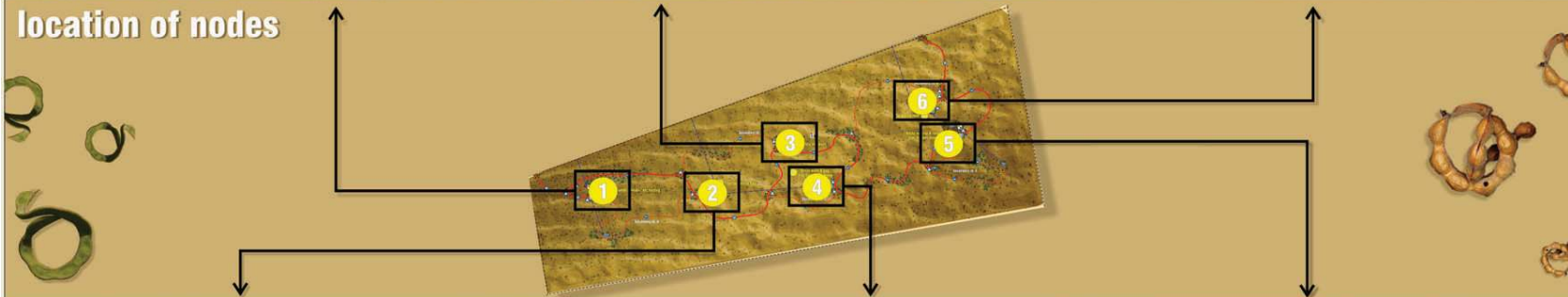


3. Broad vista viewpoint

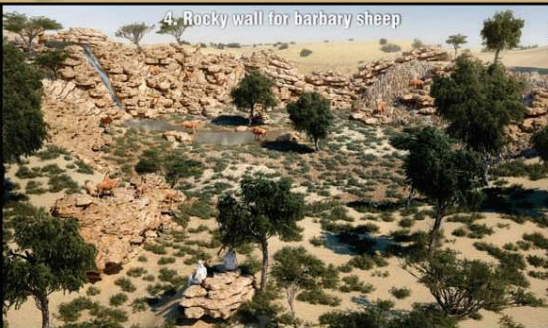


6. Star gazing node

## location of nodes



2. Tree top canopy hide

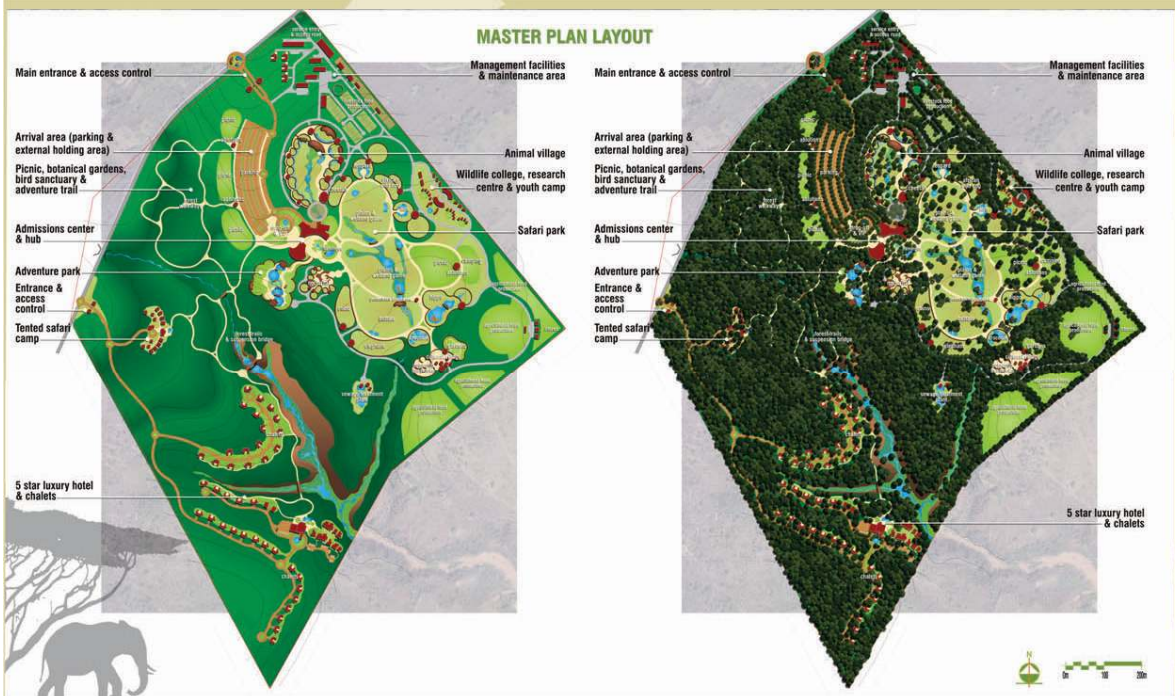


4. Rocky wall for barbary sheep

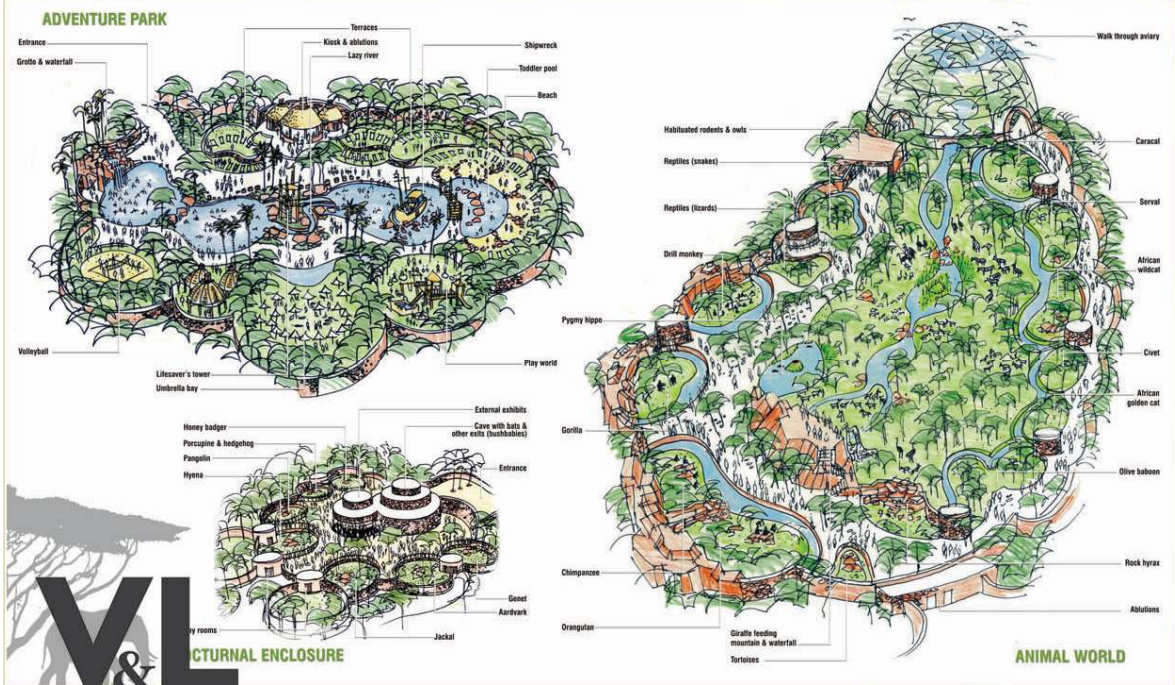


5. Rocky outcrop for ibex sheep

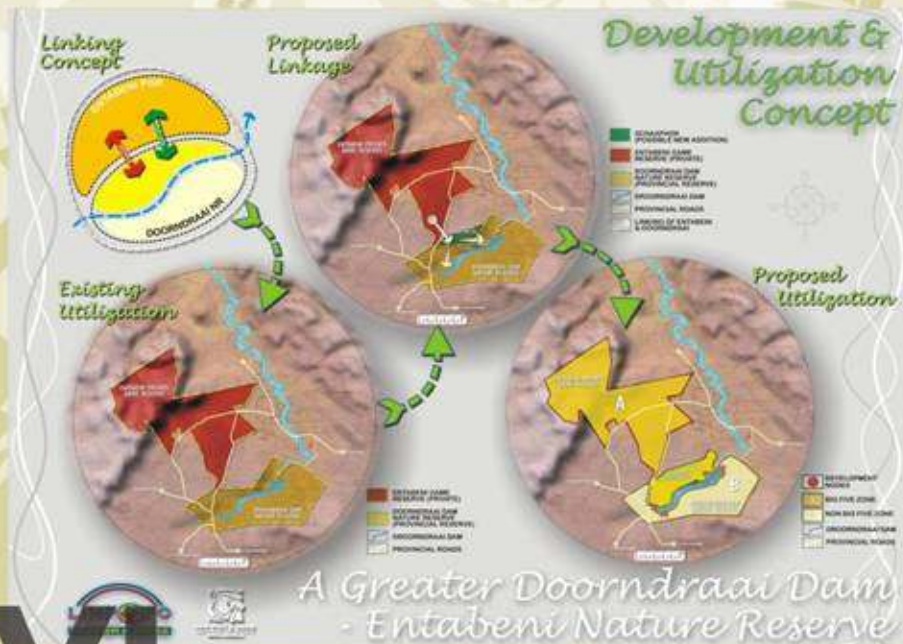




**DELTA LEISURE RESORT WILDLIFE PARK** **DEVELOPMENT MASTER PLAN**  
CONCEPT MASTER PLAN DEVELOPMENT

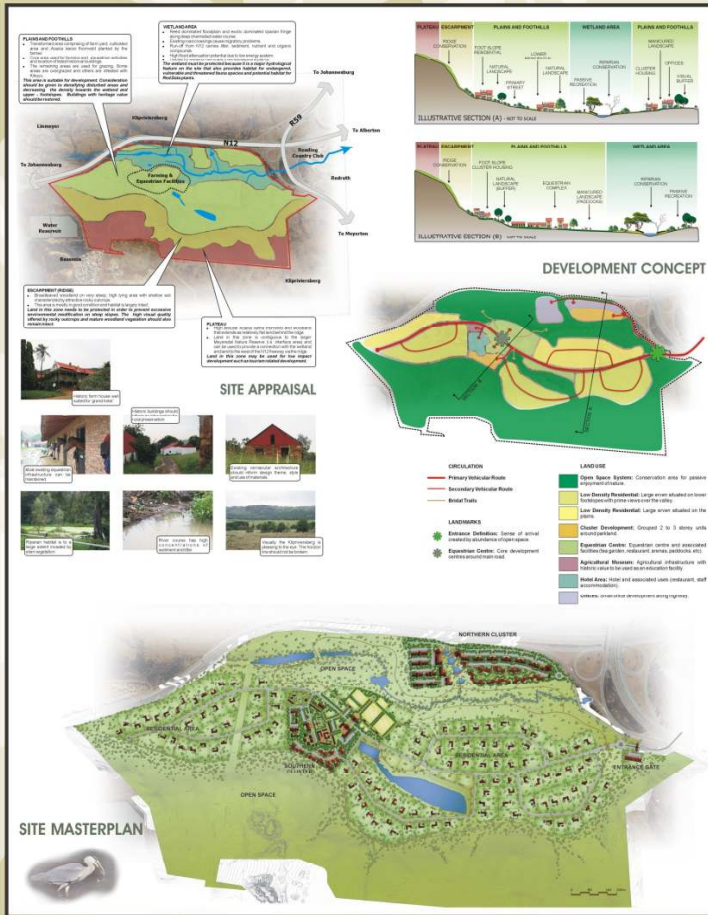
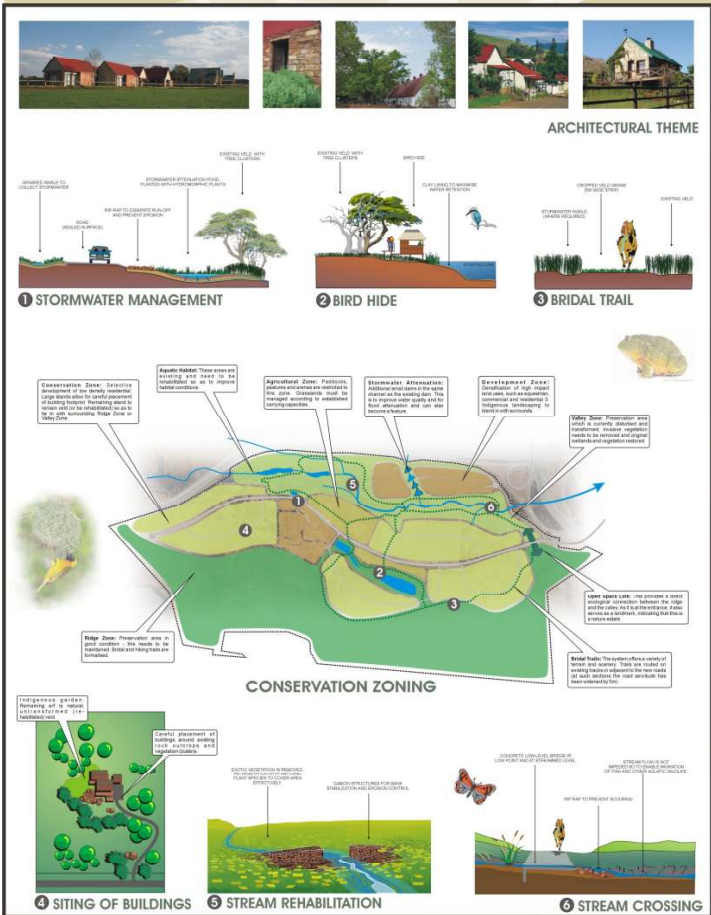






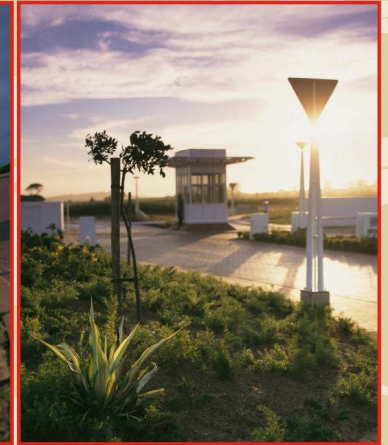
V&L were appointed by Limpopo Tourism & Parks in 2005 to develop a tourism plan for Doorndraai Nature Reserve. This documentation was used to interest private developers to invest in Limpopo Parks in order to create a private partnership with a governmental institution. A successful partner was identified in 2007 and Limpopo Tourism & Parks appointed V&L to develop a tourism plan to link Entabeni Nature Reserve with Doorndraai dam Nature Reserve and indicate possible expansions.





# PROPOSAL FOR MEYERSDAL EQUESTRIAN AND COUNTRY ESTATE

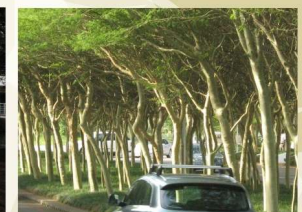
V&L was involved in the planning of Meyersdal Equestrian and Country Estate (bordering the N12 and R59 in Alberton) for the EIA process which involved the conservation and preservation of the farming history and present equestrian activities on Meyer's Farm. To achieve objectives it was decided to create a large country estate, equestrian complex in the south and a higher density residential and office cluster towards the north. The ridge and the wetland zones were left as public open space to be enjoyed by riders and walkers through the use of designated pathways.



## LA LUCIA RIDGE OFFICE ESTATE

This project entailed the development of a Land Use Master Plan for a number of development phases with GAPP Architects and Urban Designers. A landscape control guideline document was compiled, covering plant palettes, slope specification, irrigation requirements, etc. The planning was then followed with detailed design of the public spaces, consisting primarily of road verges, medians, drainage areas and visual / functional nodes. Supervision of the installation was carried out.

The other component of the appointment was the design review of the landscape proposals for the individual erven from aesthetic and guideline adherence viewpoints.





## ENVIRONMENTAL MANAGEMENT

In order to achieve sound and sustainable development, a broad spectrum of environmental management tools are applied.

Broadly defined under the umbrella of Integrated Environmental Management,

these tools include: Environmental Impact Assessments (EIAs), Strategic Environmental Assessments (SEAs), Integrated Environmental Management Plans (IEMPs) and Environmental Management Plans (EMPs).

This firm has always believed that correct ecological planning procedures will reduce the need for large impact assessments.

EIAs, IEMPs, and EMPs encompass a host of environmental planning

initiatives including aspects such as mitigation measures, rehabilitation procedures, monitoring, re-introduction of species, etc.



### Important Projects undertaken by V&L in the field of Environmental Management:

|      |  |      |  |      |   |      |   |
|------|--|------|--|------|---|------|---|
| 1999 | Ethiopia Roads; Environmental Impact Assessment of Seven Major Roads designated for Upgrading in Ethiopia. Ethiopia Roads Authority.                     | 2003 | Heidelbergkloof Estate. EIA and Environmental Auditing, Environmental Management. Koppie Eiendomme Edms Bpk. Heidelberg.       | 2009 | Mbombela Sport Stadium Water Supply ECO, Bigen Africa Services, Nelspruit.                              | 2011 | Visual Impact Assessment for the Nelson Mandela Bay Wind Farm, SRK Consulting, Port Elizabeth |
| 2001 | Lwakahle Concession Area, Kruger National Park; Development of tourist lodge, fly camps and 75km roads system in KNP. Riverledge Safari Lodge (Pty) Ltd. | 2004 | DWAF Environmental Best Practice Guidelines and Specifications. Department of Water Affairs and Forestry.                      | 2009 | Nelspruit Water Treatment Works Upgrade ECO, Bigen Africa Services, Nelspruit                           | 2014 | Krugersdorp Game Park Ecological Management Plan: Mogale City Metropolitan Municipality       |
| 2001 | Mutlumuvi Concession Area, Kruger National Park; Development of tourist lodge, fly camps and access roads in KNP. Kosi Forest Camp (Pty)Ltd.             | 2004 | DWAF Environmental Site Management and Rehabilitation Guidelines & Awareness Course. Department of Water Affairs and Forestry. | 2009 | Madiba and Roburnia Sawmills Decommissioning Basic Assessment, York Timbers, Sabie                      |      |   |
| 2002 | Niewejaarskraal Diamond Mine, Northern Cape; EMPR for alluvial mine. Transhex Operations (Pty) Ltd.  | 2005 | Mardadi Hotel, Golf and Residential Resort, EIA, Meadow Star Investments 28 (Pty)LTD.  | 2009 | Nelson Mandela Bay Municipality Proposed Windfarm VIA, SRK Consulting, Port Elizabeth                   |      |   |
| 2003 | Giriyondo Border Post, Makhadzi Picnic Spot and Giriyondo Access Road; EIA for new development. Kruger National Park. SANParks.                          | 2005 | Environmental Control Officer: Mohales Gate and Sterkfontein Caves development – Cradle of Humankind. GDACEL                   | 2010 | Hans Hoheisen Wildlife Research Station EIA, Peace Park Foundation, Stellenbosch                        |      |   |
| 2003 | Schmidtsdrift Alluvial Diamond Mine, Northern Cape; EMPR for alluvial mine. New Diamond Corporation (Pty) Ltd.   | 2006 | Environmental Good Practice Guidelines for the Development of Transfrontier Conservation Areas. Peace Parks Foundation.        | 2010 | Meyersdal Equestrian Estate VIA, Armadillo Developments, Meyersdal                                      |      |   |
| 2003 | Environmental Management System: Niewejaarskraal Alluvial Diamond Mine, Northern Cape. Transhex Operations (Pty) Ltd.                                    | 2009 | SADC Head Quarters (Gaberone) Landscape Auditing and Certification, Vela VKE, Johannesburg                                     | 2010 | Idube Game Reserve Upgrade Exemption Application, Idube Game Reserve, Sabie Sands Wildtuin, Mpumalanaga |      |   |
|      |  |      |  | 2010 | Taurus Road EIA Exclusion, York Timbers, Sabie  |      |   |
|      |  |      |  | 2011 | Egoli Gas Spatial Development EIA, GAPP Architects and Urban Designers, Johannesburg                    |      |   |

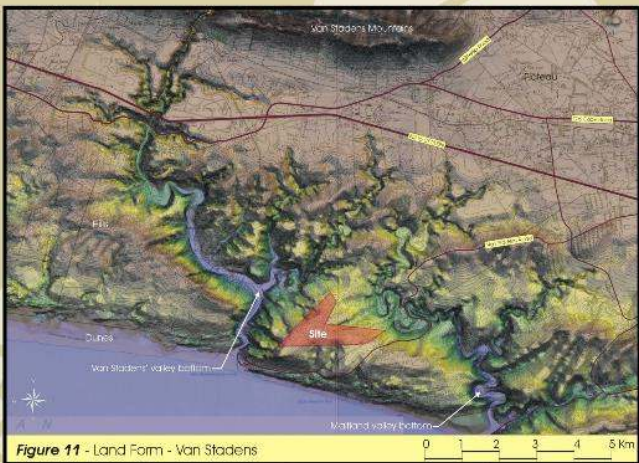


Figure 11 - Land Form - Van Stadens

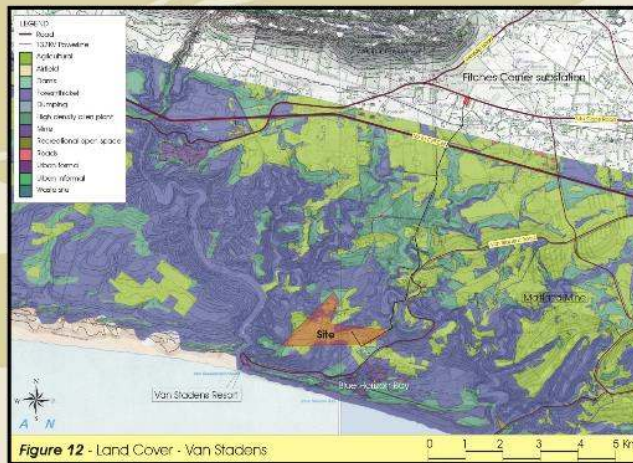


Figure 12 - Land Cover - Van Stadens



Figure 13 - Landscape Types - Van Stadens

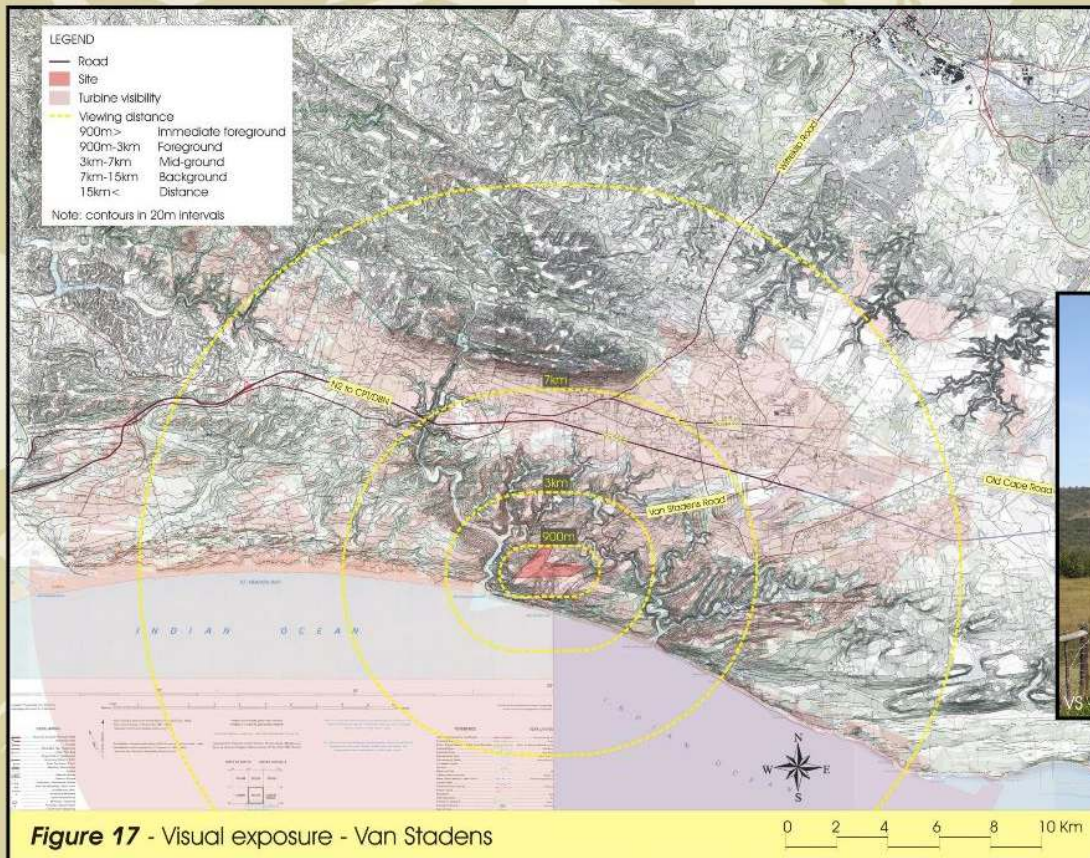


Figure 17 - Visual exposure - Van Stadens



# VISUAL IMPACT ASSESSMENT FOR THE PROPOSED NELSON MANDELA BAY WIND FARM



## LANDSCAPE PLANNING AND DESIGN

Landscape design, primarily involves the large scale planning and detailed design of all manner of open space, including private, semi private and public environments.

In this respect, Landscape Design involves the creation of functional, healthy and enjoyable exterior spaces, while at the same time protecting and enhancing the environment's physical,

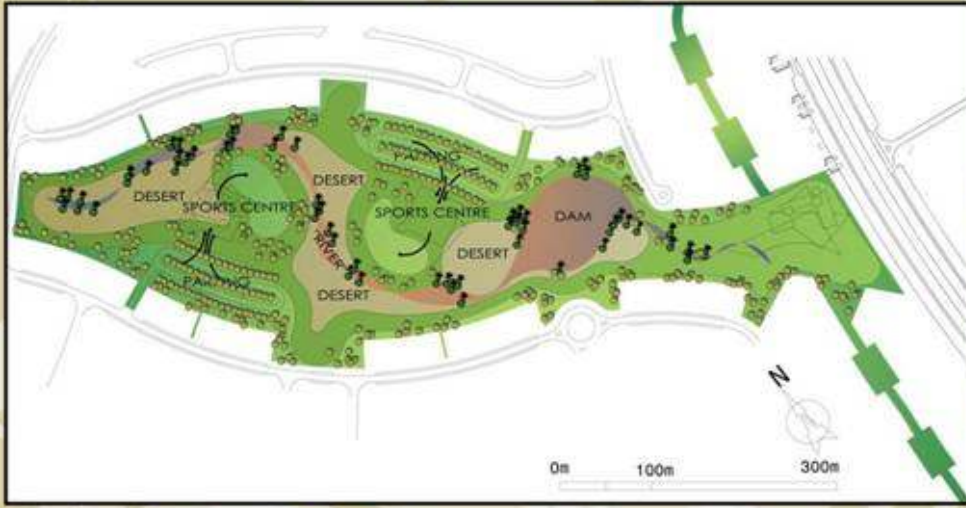
ecological and aesthetic characteristics. This is applicable in both a natural and an urban context.

Landscape Design embraces the philosophies of both environmental sustainability and spatial design.



### Important Projects undertaken by V&L in the field of Landscape Planning and Design:

|      |   |      |   |      |   |      |   |
|------|---|------|---|------|---|------|---|
| 1982 | Berg-en-Dal Rest Camp. National Parks Board Kruger National Park.                     | 2000 | Maropeng. Landscape Design. FSG. Cradle of Humankind  | 2008 | Hillbrow, Berea & Yeoville Upgrade, GAPP Architects and Urban Designers, Johannesburg   | 2010 | Rhodesfield Urban Design Framework, GAPP Architects and Urban Designers, Johannesburg   |
| 1985 | Urban Landscape of the Alberton Boulevard. Alberton City Council, Alberton.           | 2003 | Wits University Development Framework. Wits University, Johannesburg.                       | 2008 | Carr/Diagonal St. Landscape Upgrade, GAPP Architects and Urban Designers, Johannesburg  | 2010 | Meysersdal Equestrian Estate Master Planning, Armadillo Developments, Meyersdal         |
| 1992 | Church Street Pedestrianisation. City Council of Pretoria, Pretoria.                  | 2003 | Tinapa Business Resort. Calabar, Nigeria.   | 2008 | Pageview Vrededorp Fordsburg Landscape Upgrade, GAPP Architects and Urban Designers, Johannesburg   | 2011 | New Gateways for Barberton, BATOBI, Barberton.  |
| 1995 | Melrose Arch. Precinct Landscape Design. Mine Pension Funds Properties. Johannesburg. | 2005 | Leloko Lifestyle Estate, Precinct and Detail landscape design, ProjectProp, Hartebeespoort. | 2008 | Dubai Family Adventure Ecopark – Nad Al Sheba, International Conservation Services, Dubai   | 2011 | Al Ansab Wetland landscape, Haya Water, Oman  |
| 1997 | Kwa-Madiba Farm. Iscor, Umtata.   | 2008 | Urban Design for University of Johannesburg, University of Johannesburg, Johannesburg       | 2008 | Mooikloof Office Park Landscape Design – Mooikloof Estates, Pretoria  | 2012 | Fairacres Events Sanctuary Landscape, Kuramo UK Ltd., Nigeria.                          |
| 1997 | Melrose Arch Office Estate Development. Mine Pension Funds Properties. Johannesburg.  | 2008 | Eerste Fabrieke Urban Design Planning, Urban Dynamics, Pretoria                             | 2008 | Lanseria Industrial Estate Landscape Design – Lanseria Trust One, Johannesburg  | 2013 | Al Nakhali Safari Park, His Highness Sheikh Mohammed Bin Rashid Al Maktoun, Dubai       |
| 1998 | Emerald Safari Resort. Samrand Developments, Vanderbijlpark.                          | 2008 | Coega Ridge Urban Design Planning, Nu-way, Port Elizabeth                                   | 2009 | Sir Bani Yas Quarantine Facility Design, (Abu Dhabi), International Conservation Management Consultancies, Dubai                              | 2013 | National Heritage Monument Project, The National Heritage Project Company, Pretoria.    |
| 1999 | Moretele And Mamelodi Community Parks, Mamelodi Town Council, Pretoria                | 2008 | Rainbow Junction Multiple Use Development, RBJ, Pretoria                                    | 2009 | St Paulus Recycling Village architectural and landscape design and construction supervision. St Paulus School, Pretoria. <i>Pro-Bono work</i> | 2013 | Union Buildings: Nelson Mandela Sculpture Landscape, Koketso Growth (Pty) Ltd, Pretoria |
| 1999 | Southdowns Precinct. Urban and detail design. Centurus. Irene                         | 2008 | Standard Bank SCC, Landscape Design Standard Bank, Midrand                                  |      |   | 2013 | Delta Leisure Resort – Wildlife Park, SARNER PFN Resorts Ltd, Delta State, Nigeria      |



## DUBAI LAND

The project addressed the Community Project component within the greater Dubailand theme park development, constituting a 210ha site with residential, commercial, retail and sport / recreational uses. The developers were Dubailand Properties.

The primary open space components included a central retail / commercial boulevard, a large central natural park and an artificial lake, around which would be a waterfront development including a large aquarium. In support of these were various levels of residential and commercial open spaces, a peripheral buffer / recreational zone, and a number of community nodes. The appointment consisted of the development of a landscape strategy, informing a design report, which was to be carried over to a further detailed design appointment, possibly for other consultants.

The strategy was seen as a process rather than a single statement / series of statements. A brief overview was presented of the underlying inherent characteristics of the site / region and the planning / design requirements (base line) for the project. The document then explored a range of philosophies and assumptions, as basis. These, with the above philosophies, then lead to guiding principles. No specialist studies were undertaken for this document. The landscape design report specified the performance and aesthetic qualities required for the further development of the detailed design, given as Landscape Design Principles: Spatial Elements, and Landscape Design Principles: Non-spatial Elements.





*Combretum erythrophyllum*



*Rhus lancea*



*Carpobrotus edulis*



*Othonna capensis/carmota*



*Diets grandifolia*



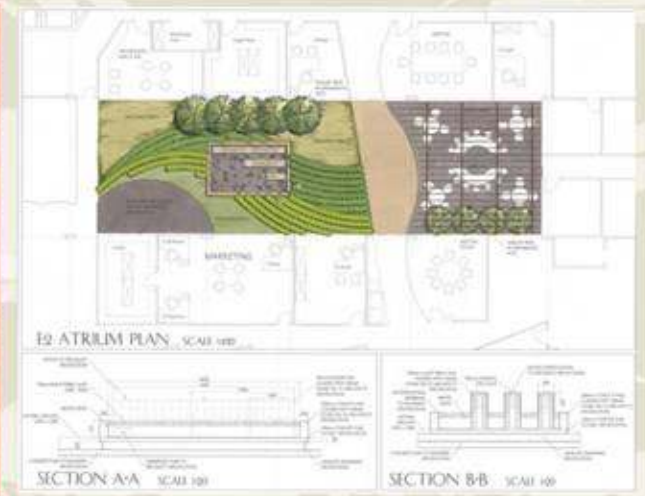
**PROJECT DESCRIPTION** Lanseria Corporate Estate is an industrial estate located on the south side of Lanseria airport. It makes part of Cradle City: a mixed-use sustainable precinct adjacent to the airport. Design decisions were made taking into consideration phasing and current knowledge on sustainability. The plan represented on this poster forms Stage 1 of Phase 1.

The landscape for Lanseria Corporate Estate comprises responsible planting making use of indigenous plants to re-establish indigenous vegetation in the greater Lanseria area and also to create habitats for birds and other wild-life. Pocket parks are found along north-south roads creating break-away zones where office workers can enjoy outside space during lunch hours. Trees are used extensively throughout the design in an effort to shade the road, walkways and parks, thus helping to control the micro-



# LANSERIA CORPORATE ESTATE





## MELROSE ARCH Phase 1

Melrose Arch is a mixed use precinct of perimeter block developments, clearly defining public and private realms. The appointment included the surveying of existing plant material with a view to retaining (socially) significant specimens, the participation in the urban design development, the detailed design and implementation of the public open space, a riverine park and of four of the private open space courtyards. All of the landscape is situated over parking.





## MTN Campus

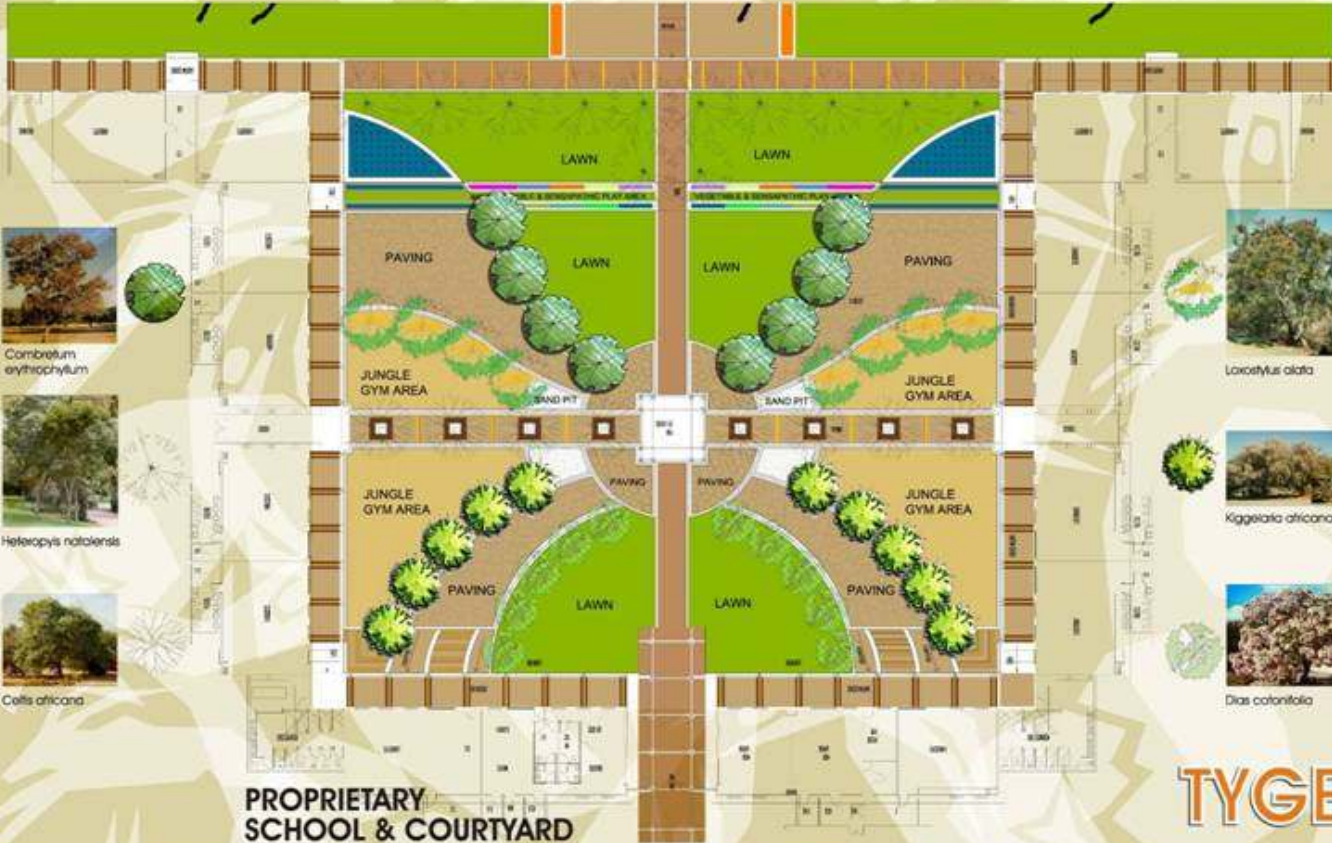
The MTN Campus (Fairlands, Johannesburg) is a seven-phase project. The appointment was for the development of a site master plan and the detailed planning and design of Phase 1. The landscape master planning was carried out as informant for further built and open space development. The landscape portrays a high-tech approach to African themes, all within the overall theme of expressed communication.





**SOUTHDOWNS COLLEGE**





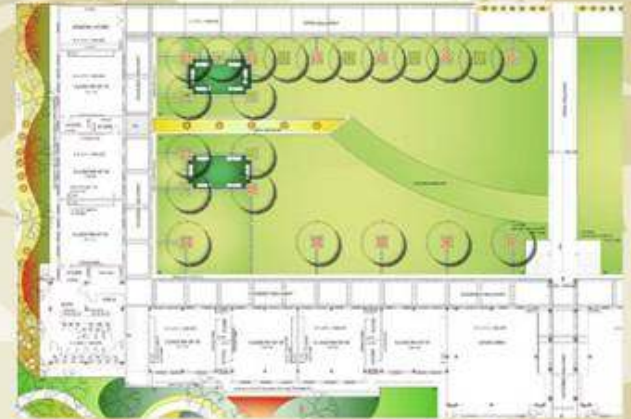
Combretum erythrophyllum



Heteropogon natalensis



Celtis africana



Loxostylis alata



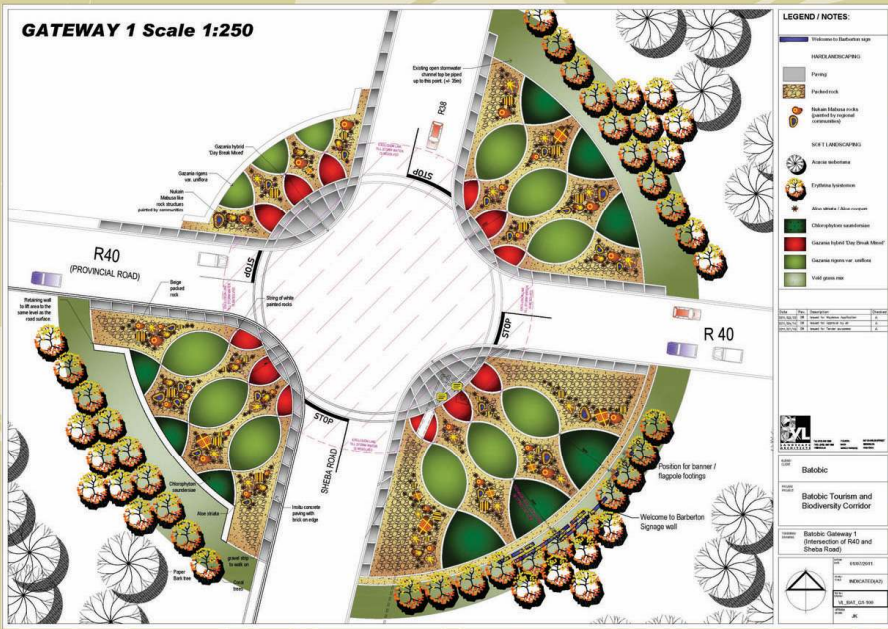
Kiggelaria africana



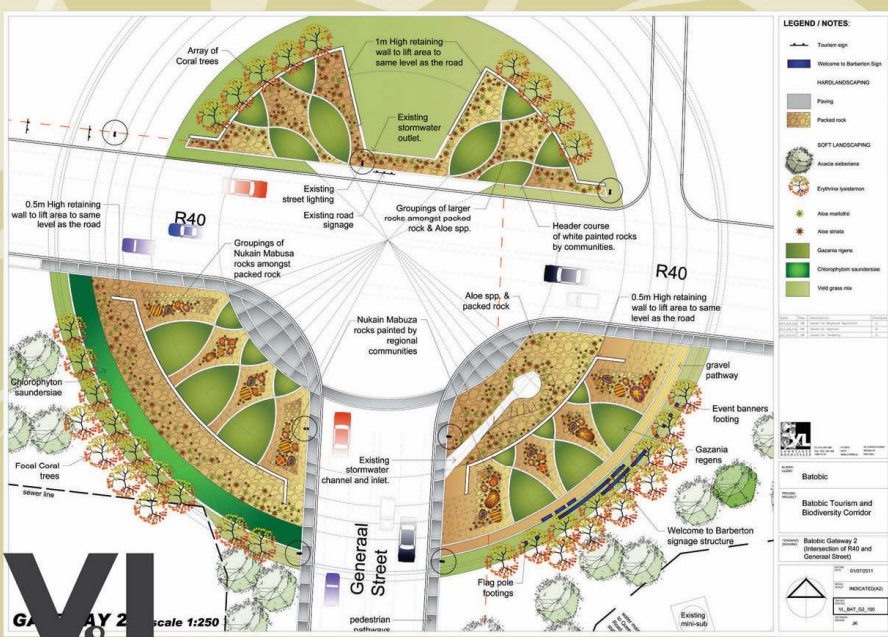
Dias cotinifolia

# TYGERVALLEY COLLEGE





# BARBERTON TOWN GATEWAYS







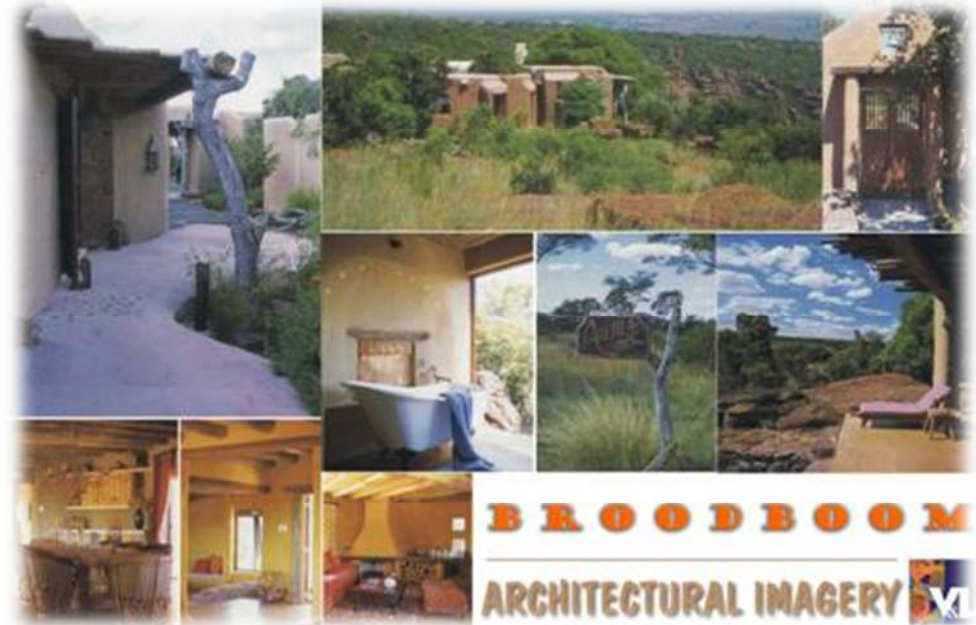
## TOURISM MASTER PLANNING

V&L have been involved in tourism master planning throughout Southern Africa for more than a decade, playing a pivotal role in the planning and

implementation of the Transfrontier Conservation Areas for the Peace Parks organisation and the Department of Environmental Affairs and Tourism. The

company has pioneered a planning process based on the 4 primary determinants of a successful tourism

development i.e. Access, Amenities, Attractions and Awareness.





# Tourism Development Plan for the Nsubane Pongola Transfrontier Conservation Area

The Nsubane-Pongola Transfrontier Conservation and Resource Area is one of five protocol areas that constitute the Lubombo Transfrontier Conservation Area (TFCA). The Lubombo Transfrontier Conservation Area came into being with the signing of a bilateral treaty between the governments of South Africa and Swaziland in March 2000. Recently, the Bi-lateral Task Team for the Protocol agreed that the first phase of the development of the TFCA will be the amalgamation of the Royal Jozini Big Six Project in Swaziland with the Phongola Nature Reserve and the Pongola Game Reserve in South Africa. The inclusion of Mapondwana and Mejozini CCA is also contemplated.

## The Challenge:

There exists a state of confusion regarding tourism development in the area as a result of an extensive amount of planning within the region spanning the past 7 years much of which has not been implemented.

Unclear and informalised relationships between the adjacent conservation estates has presented the risk of incompatible development and intercompetition, which has in the past resulted in under-utilisation of resource potential and poor benefit flows local and affected communities.

The aims and objectives of the Nsubane-Pongola TFCA are listed in the protocol. In respect of this study the following aim is highlighted.

Principal Aim of the TFCA in terms of tourism: 'To realise economic returns from tourism and associated activities in the Area.'

Commercialisation of ecotourism facilities in the component conservation estates has been identified as the mechanism for this.

## Primary Aim of this study:

Develop an overarching Framework to guide the integration of tourism developments in the TFCA to ensure that intercompetition is minimised and that maximum benefit is derived from joint and complimenting commercial operators.

## Objectives of this study:

- Assess the current status of and demand for ecotourism products in the TFCA and the surrounding area within the ecological, cultural and aesthetic carrying capacity of the TFCA and the management and business plans of the three conservation estates.
- Develop a strategic framework for ecotourism development planning
- Draft a plan to develop a range of viable ecotourism products for the TFCA, including overnight facilities, recreational activities and other associated facilities or activities
- Assess and conclude on the viability of the potential developments and ensure that the preferred alternatives are socially, economically and environmentally responsible and sustainable.



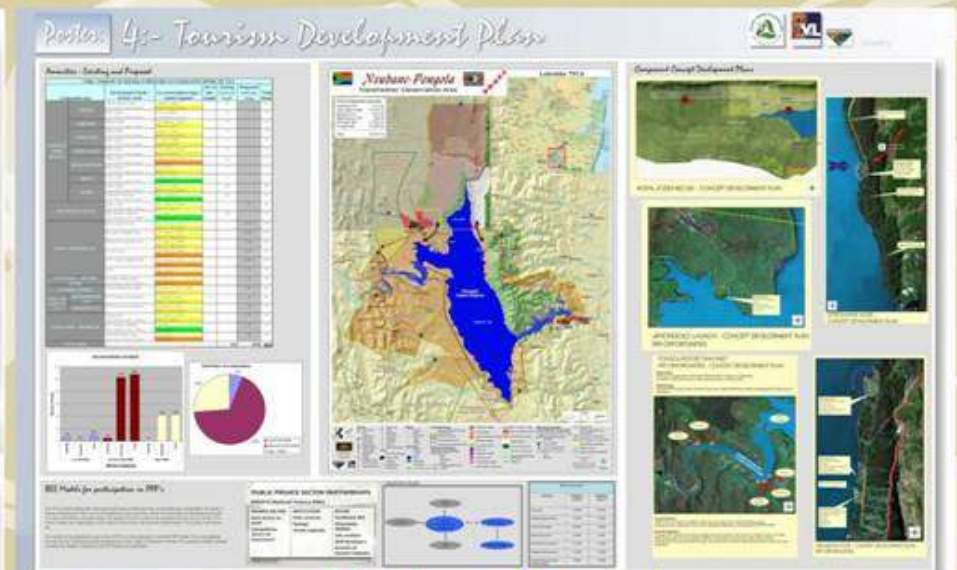
## Nsubane Pongola Transfrontier Conservation Area



## Nsubane Pongola Transfrontier Conservation Area



## Nsubane Pongola Transfrontier Conservation Area



## Nsubane Pongola Transfrontier Conservation Area



LUXURY HUNTING ESTATE - EL MAHA FOREST

### MAN MADE ENVIRONMENT 1

ATLANTIC OCEAN  
RABAT

ORIENTATION MAP

EL MAHA FOREST  
*Hunting Estate*

April 2006

### LIVING ENVIRONMENT 2-2

VEGETATION & SOIL RELATIONSHIP

VEGETATION SURVEY DATA

VEGETATION AND SOIL SURVEY POINTS

EL MAHA FOREST  
*Hunting Estate*

April 2006

### PROPOSED ZONING AND CIRCULATION 3

PROPOSED ACTIVITY ZONES FROM SOUTH TO NORTH

PROPOSED ACTIVITY ZONES FROM NORTH TO SOUTH

EL MAHA FOREST  
*Hunting Estate*

April 2006

### 7. PROPOSED DEVELOPMENT MASTER PLAN (Cont.) Page 21

Barbary deer breeding area  
Bird hunting area (driven)  
Southern boar hunting area  
Double spur francolin breeding area  
Duck breeding and resting area  
VIP lodge site option A  
Bird hunting area (walk-up and driven)

Existing main gate  
VIP lodge site option B  
Northern boar hunting area  
Bird hunting area (walk-up)  
Fishing area  
Fishing area  
Bird hunting area (driven)  
Duck hunting area

A PERSPECTIVE VIEW OF THE MASTER PLAN VIEWED NORTH TO SOUTH

EL MAHA FOREST  
*Hunting Estate*

April 2006



**BOUNDLESS**  
SOUTHERN AFRICA  
*Nature Culture Community*

**1 TRAIL / 2 OCEANS / 7 TRANSFRONTIER PARKS / 9 COUNTRIES**  
30 NATIONAL PARKS & RESERVES / 3 MAJOR RIVER SYSTEMS / 3 RAMSAR SITES / 4 BIOMES / WORLD'S LARGEST INLAND DELTA / WORLD'S SECOND LARGEST CANYON / OLDEST DESERT / LARGEST VEGETATED SAND MANTLE / DIVERSE CULTURES / ABUNDANT GAME AND PLANT SPECIES

*Kingozi Hagege*



**IAI-Ais Richtersveld Transfrontier Park**

A vast, inhospitable, arid, Karoo-based Transfrontier Park encompasses the 17,000 km<sup>2</sup> world's oldest and hottest salt pan, an abundance of birdlife and unique desert flora, the world's largest sand dunes, the world's largest, longest river, unique flora and fauna, and a rich history of human occupation.

**Kgalagadi Transfrontier Park**

The Kgalagadi Transfrontier Park is a vast, arid, and semi-arid region in southern Africa, known for its unique desert landscape, rich biodiversity, and historical significance.

**Kavango Zambezi Transfrontier Conservation Area**

The largest inland delta in the world, the Kavango Zambezi Transfrontier Conservation Area is a vast, fertile, and ecologically diverse region in southern Africa, known for its unique wetland landscape, rich biodiversity, and historical significance.

Boundless Southern Africa is a union of nine countries that share a great passion for nature, culture and community. It showcases seven unique and extraordinarily diverse transfrontier conservation areas.

A Transfrontier Conservation Area is an area straddling across two or more international borders where the natural and cultural resources are collaboratively managed by the governments or authorities involved.



**Maloti Drakensberg Transfrontier Conservation Area**

Straddling the border between Lesotho and South Africa, the Maloti Drakensberg Transfrontier Conservation Area is a vast, mountainous region known for its unique landscape, rich biodiversity, and historical significance.

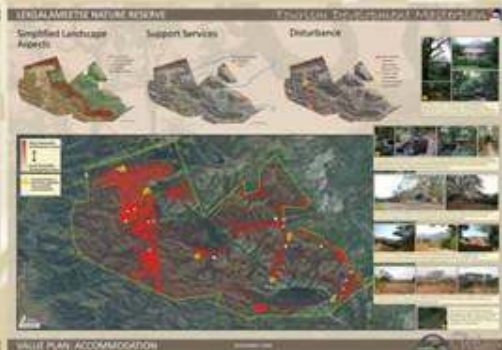
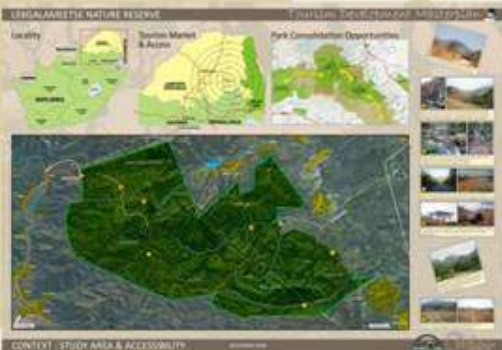
**Lubombo Transfrontier Conservation Area**

The Lubombo Transfrontier Conservation Area is a vast, fertile, and ecologically diverse region in southern Africa, known for its unique wetland landscape, rich biodiversity, and historical significance.

**Great Limpopo Transfrontier Park**

The Great Limpopo Transfrontier Park is a vast, fertile, and ecologically diverse region in southern Africa, known for its unique wetland landscape, rich biodiversity, and historical significance.





**LEKGALAMEETSE NATURE RESERVE**

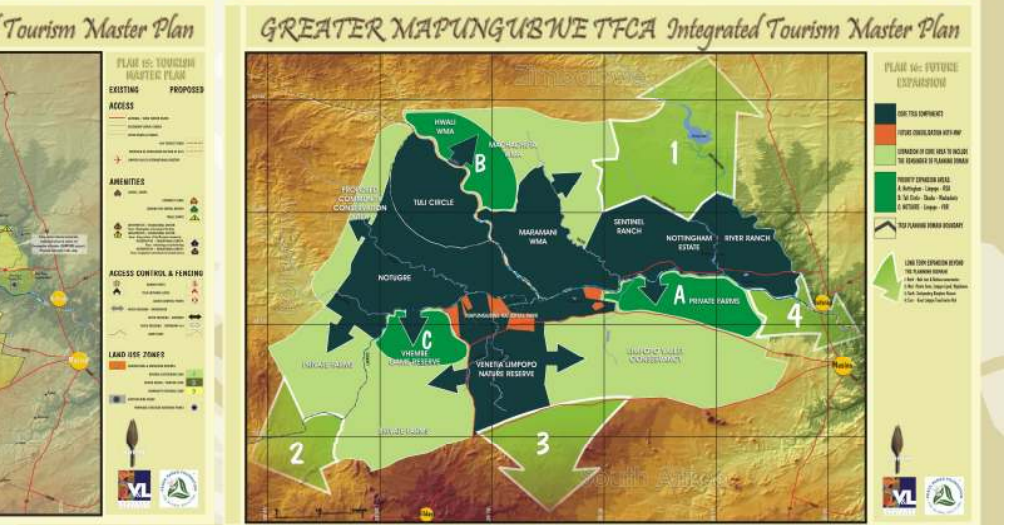
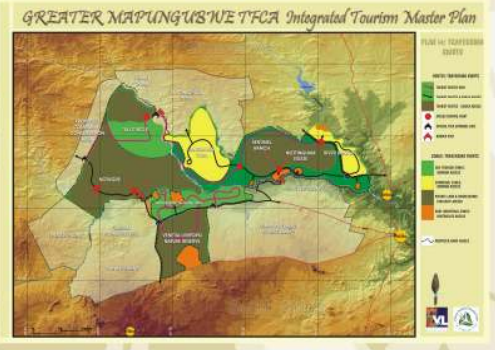
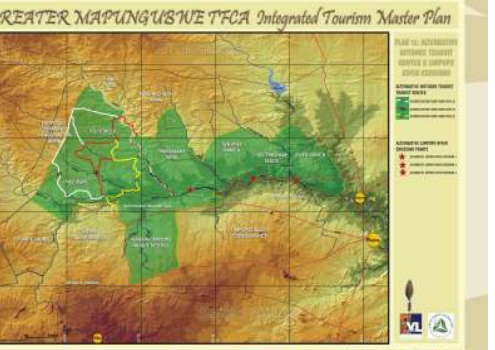
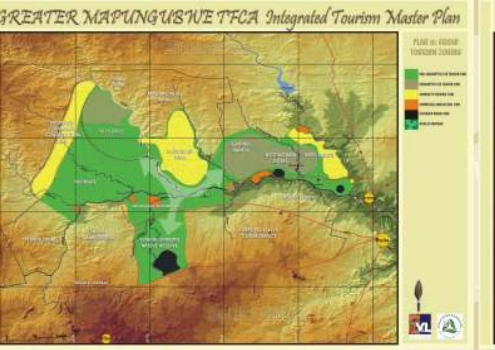
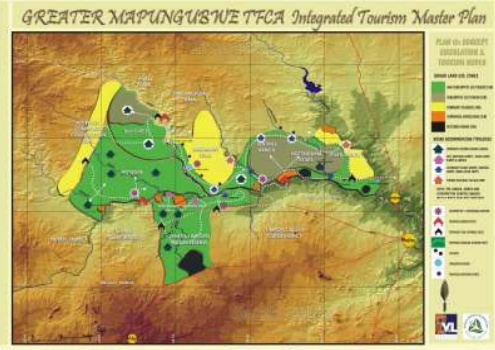
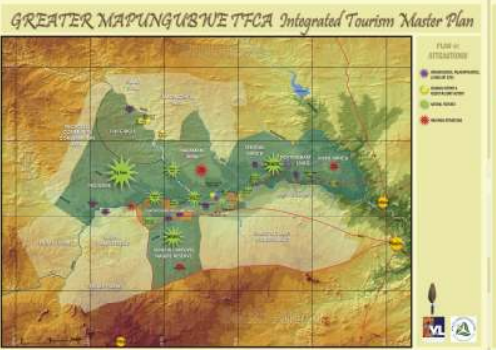
*Tourism Development Masterplan*



MASTERPLAN

NOVEMBER 2009









# LOCALITY



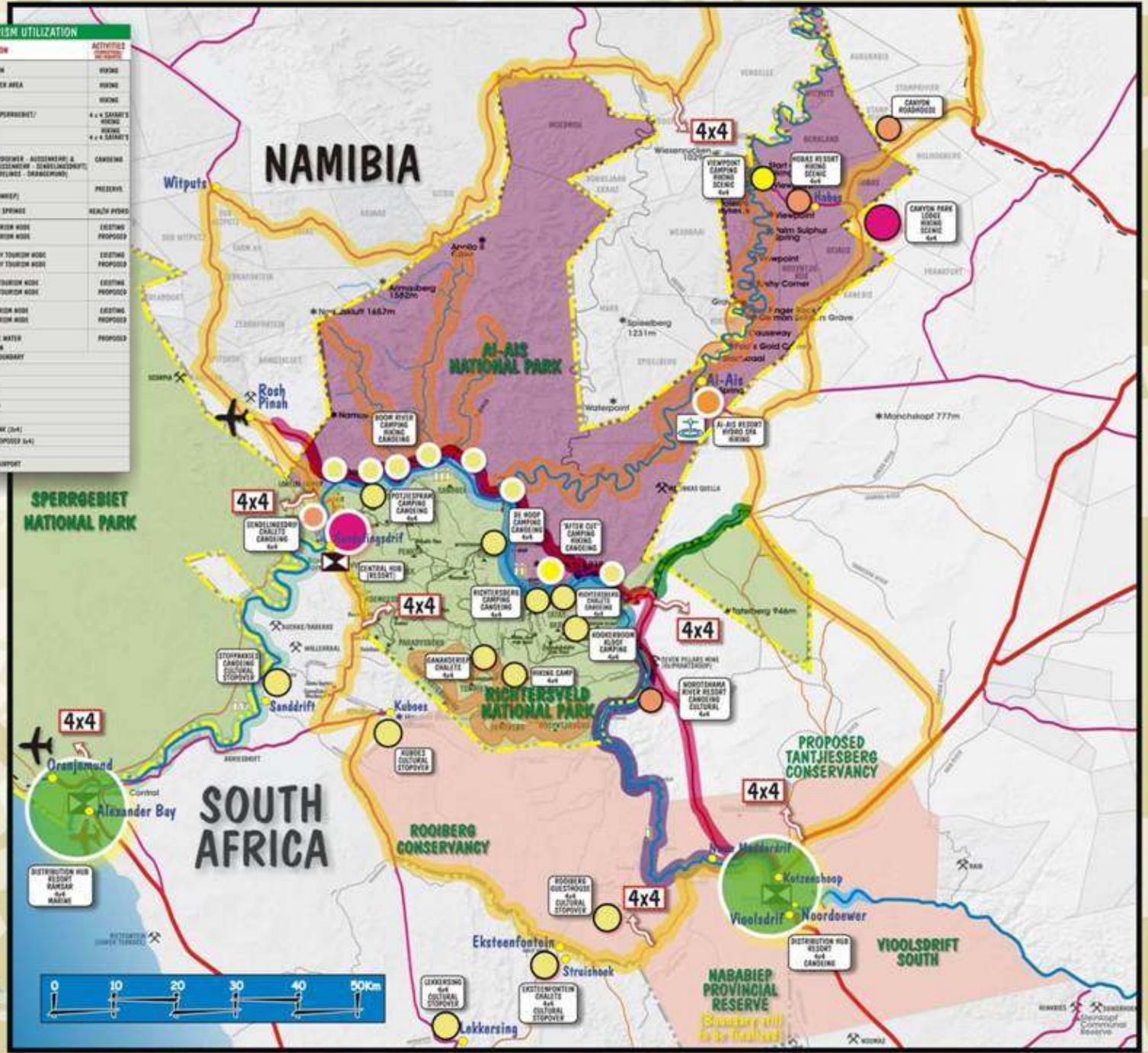
# REGIONAL LINKAGES



# NAMIBIAN TOURISM STRUCTURE



| TOURISM UTILIZATION |   |                         |
|---------------------|---|-------------------------|
| SYMBOL              | DESCRIPTION   | ACTIVITIES              |
|                     | FISH RIVER CANYON   | HIKING                  |
|                     | BOOM / NAAR RIVER AREA  | HIKING                  |
|                     | RICHTERSVELD  | HIKING                  |
|                     | RICHTERSVELD / SPERRGEBIET / TOUWRIJN   | 4 x 4 SAFARI'S - HIKING |
|                     | EDENSPRANG  | HIKING 4 x 4 SAFARI'S   |
|                     | ORANGE RIVER (SECTION I - ROOIBOSWATER - ACCIDENTWATER & SECTION II - ACCIDENTWATER - SANDLINGDRIF) (SECTION III - SANDLINGDRIF - DRANGENWATER) | CANOEING                |
|                     | MULDERWISS (ROOIBOSWATER & HOEPLAAS)  | PRESERVE                |
|                     | AI-AIS HOT WATER SPRINGS  | HEALTH SPOTS            |
|                     | HIGH DENSITY TOURISM NODE   | EXISTING                |
|                     | HIGH DENSITY TOURISM NODE   | PROPOSED                |
|                     | MEDIUM DENSITY TOURISM NODE   | EXISTING                |
|                     | MEDIUM DENSITY TOURISM NODE   | PROPOSED                |
|                     | LOW DENSITY TOURISM NODE  | EXISTING                |
|                     | LOW DENSITY TOURISM NODE  | PROPOSED                |
|                     | POTENTIAL FUTURE WATER BASED RECREATION   | PROPOSED                |
|                     | NATIONAL PARK BOUNDARY  |                         |
|                     | BORDER POST   |                         |
|                     | NATIONAL ROAD   |                         |
|                     | MAIN ROAD   |                         |
|                     | SECONDARY ROAD  |                         |
|                     | RING ROAD (4x4)   |                         |
|                     | ORANGE RIVER LINK (4x4)   |                         |
|                     | CARRIAGE LINK (PROPOSED 4x4)  |                         |
|                     | RIVER   |                         |
|                     | INTERNATIONAL AIRPORT   |                         |



## EMPOWERMENT INITIATIVES

V&L endeavours to provide landscape architectural expertise and skills in the field of Landscape Architecture through project development, research and training.

This is conducted over a wide field for the improvement of the quality of life of all South Africans.

- **V&L** is committed to the highest level of expertise and professionalism.
- **V&L** believes that the natural and urban environment requires reconstruction and development to deal with the impact of previous political dispensations.

- **V&L** upholds a value system that stresses equal opportunities and distances itself from discrimination based on gender, age, creed or colour.

- **V&L** is committed to a programme of affirmative action to advance those that have been historically disadvantaged.

The profession of landscape architecture is relatively young in South Africa and, as such, has not yet managed to attract many students from disadvantaged communities.

In the absence of suitably qualified affirmative candidates, V&L has approached the solution to this problem in a different way, to firstly promote the profession, and secondly to provide financial support to HDI students.

In 1998, the company took the first, and then only, local black student of landscape architecture, Mr Thabo Munyai, under its wing.

Financial assistance was made available for university fees and Thabo was employed on a part time basis. Thabo graduated in 2003 and is now a successful landscape architect.

V&L continued with this programme in 2007, when they appointed Ntsebo Mofoka, a landscape architectural student at the University of Pretoria. Ntsebo received on the job training and support from the firm during her tenure at university.

V&L has also built up a close working relationship with a famous local sculptor, Mr. Ike Mkoana in support of his work. V&L have provided work space and display areas for Ike at their Pretoria offices, and assist with his administrative requirements.

His works continue to be actively promoted by the company.

