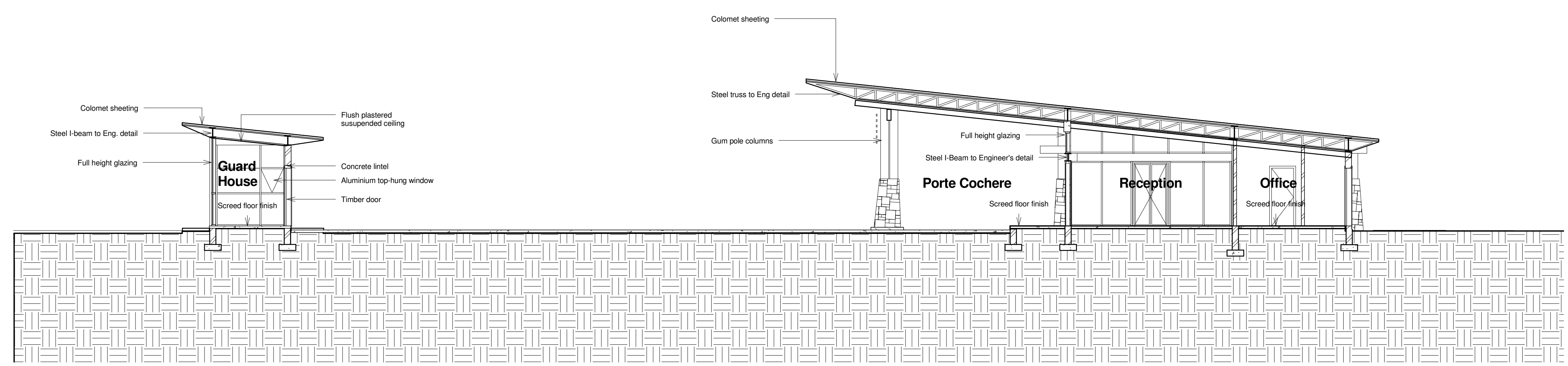
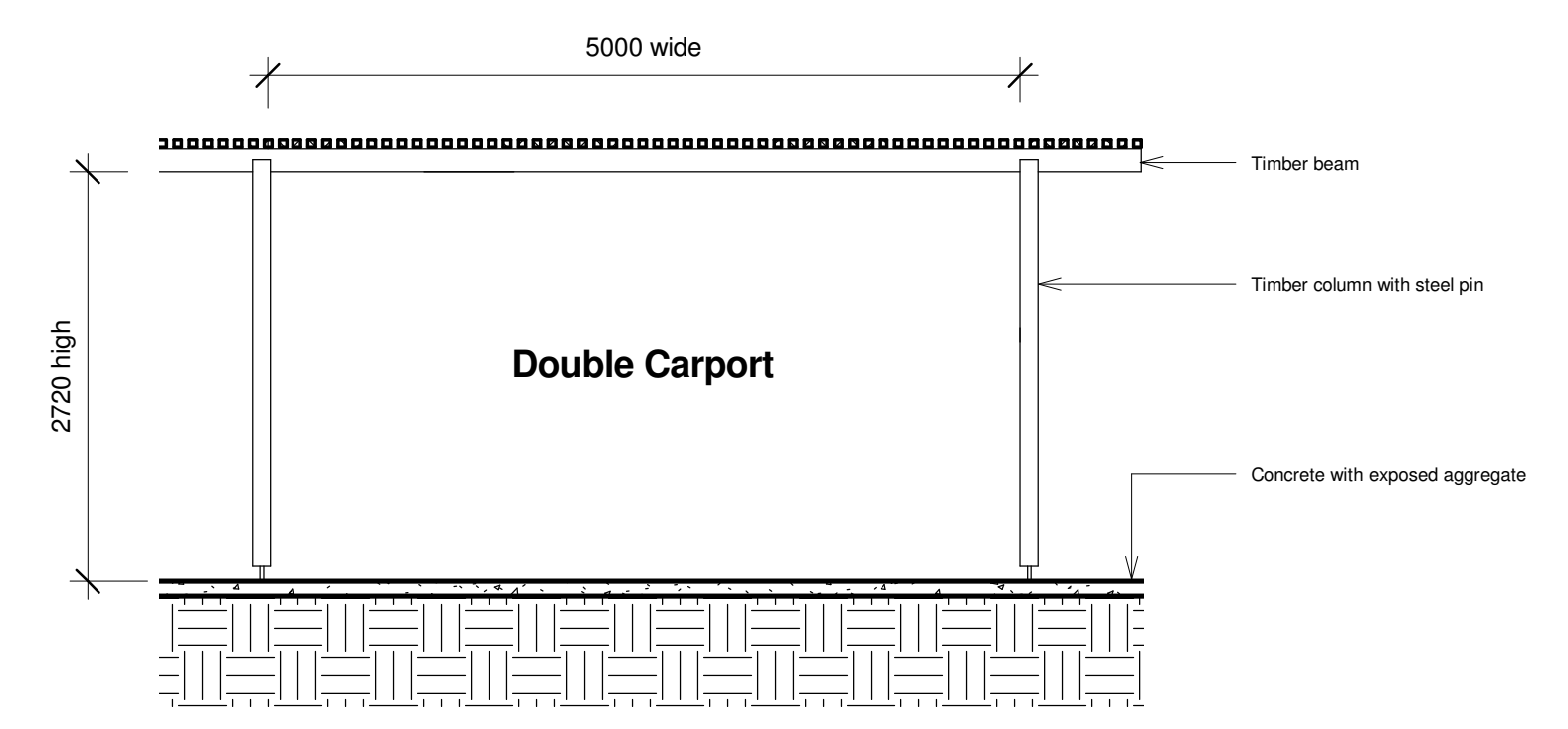


1 Parking Layout
1 : 500



2 Section G-G
1 : 100



3 Carport Section
1 : 50

THIS DRAWING IS SUBJECT TO COPYRIGHT AND MAY NOT BE REPRODUCED IN WHOLE OR PART OR IN ANY MANNER WHATSOEVER WITHOUT WRITTEN PERMISSION FROM CRONJE ASSOCIATED ARCHITECTS CC

PARKING SPACES
RADISSON HOTEL 105
KRUGER PARK VISITORS 40

Rev	Date	Description	Issued by
7	24/08/2011	1 - Entrance gum poles reduced to make columns more slender	Roger
6	08/08/2011	1 - Structure and materials revised 2 - Roof height reduced	Roger
5	03/02/2011	1 - Welcome Centre moved to right hand side of parking 2 - New Parking Layout 3 - Entrance road shortened	Roger
4	28/01/2011	1 - New parking Layout	Sarah
3	25/01/2011	1 Covered walkway around building 2 - Lounge room moved position 3 - We for driver included at the back	Sarah
2	14/01/2011	1 - Layout of Welcome Centre revised and revised	Sarah
1	15/12/2010	1 - Layout for Welcome Centre revised	Sarah

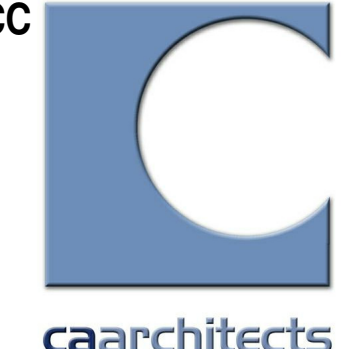
☐ ISSUE FOR COUNCIL SUBMISSION
☐ FOR INFORMATION ONLY
☐ FOR TENDER PURPOSES ONLY
☐ ISSUE FOR APPROVAL
☒ ISSUE FOR CONSTRUCTION

SIGNED FOR CONSTRUCTION
ARCHITECT:
CLIENT:
IF THIS DRAWING IS NOT SIGNED BY THE ARCHITECT IT IS NOT FOR CONSTRUCTION PURPOSES

PROJECT
Radisson Blu- Safari Hotel- Kruger National Park

DESCRIPTION
Gate Parking Facility and Welcome Centre

CRONJE ASSOCIATED ARCHITECTS CC
Suite E- MGA House
Wimble Close
Balfour Business Park
P.O. Box 6438 Zimbali 4418
Tel: +27 32 946 3830/1
Fax: +27 32 946 3835
email: lewellyn@caarchitects.co.za
reg no 2821



Drawn Roger
Project nr: 285
Sheet nr: 285-SK01-K100
Date 2011/08/07
Rev Nr. 7

C:\Documents and Settings\Roger\My Documents\Current Jobs\1 Week 28 June 27 13 06\Radisson Blu\K welcome centre\2011 08 27 Welcome Centre.rvt